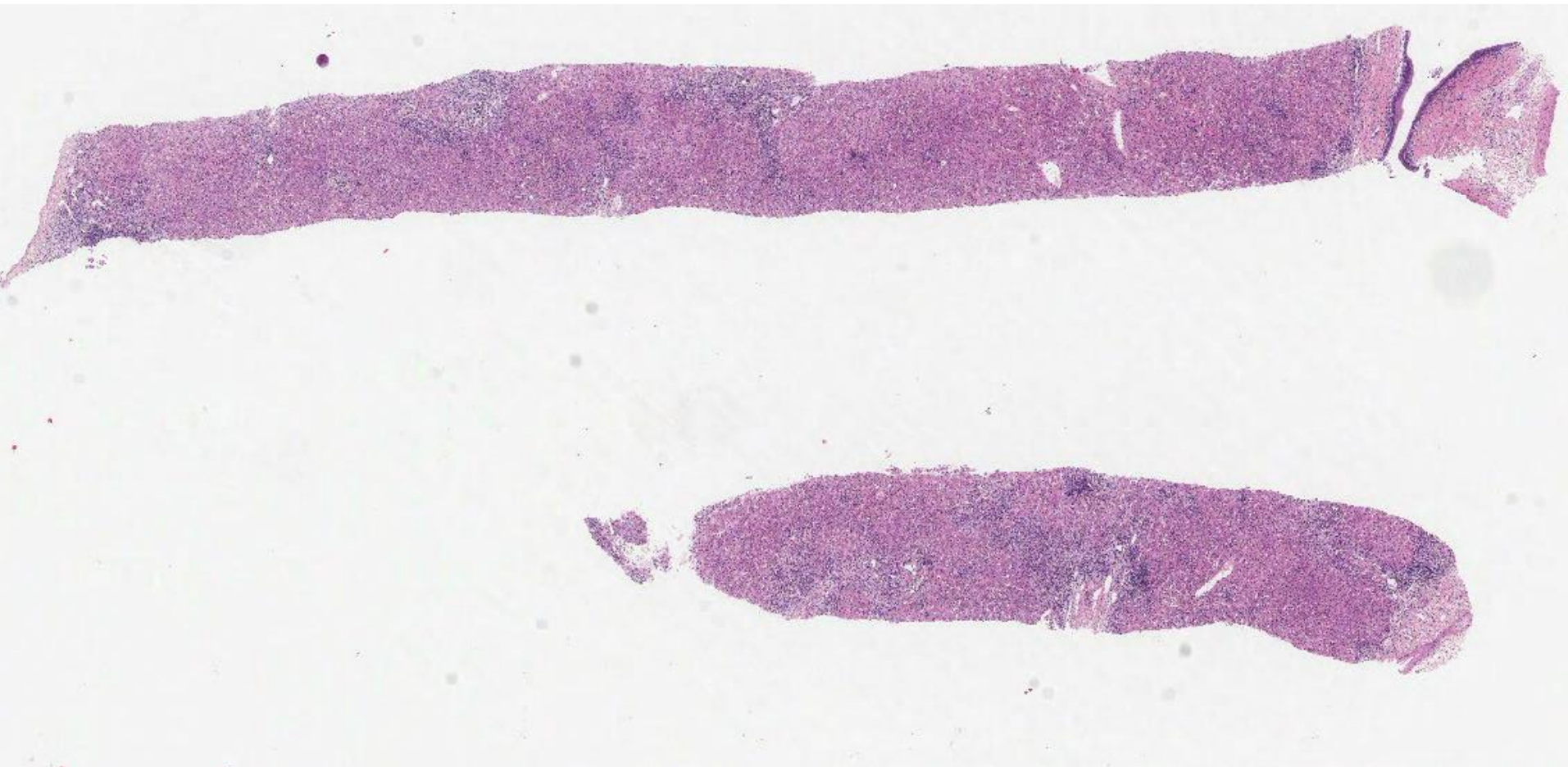


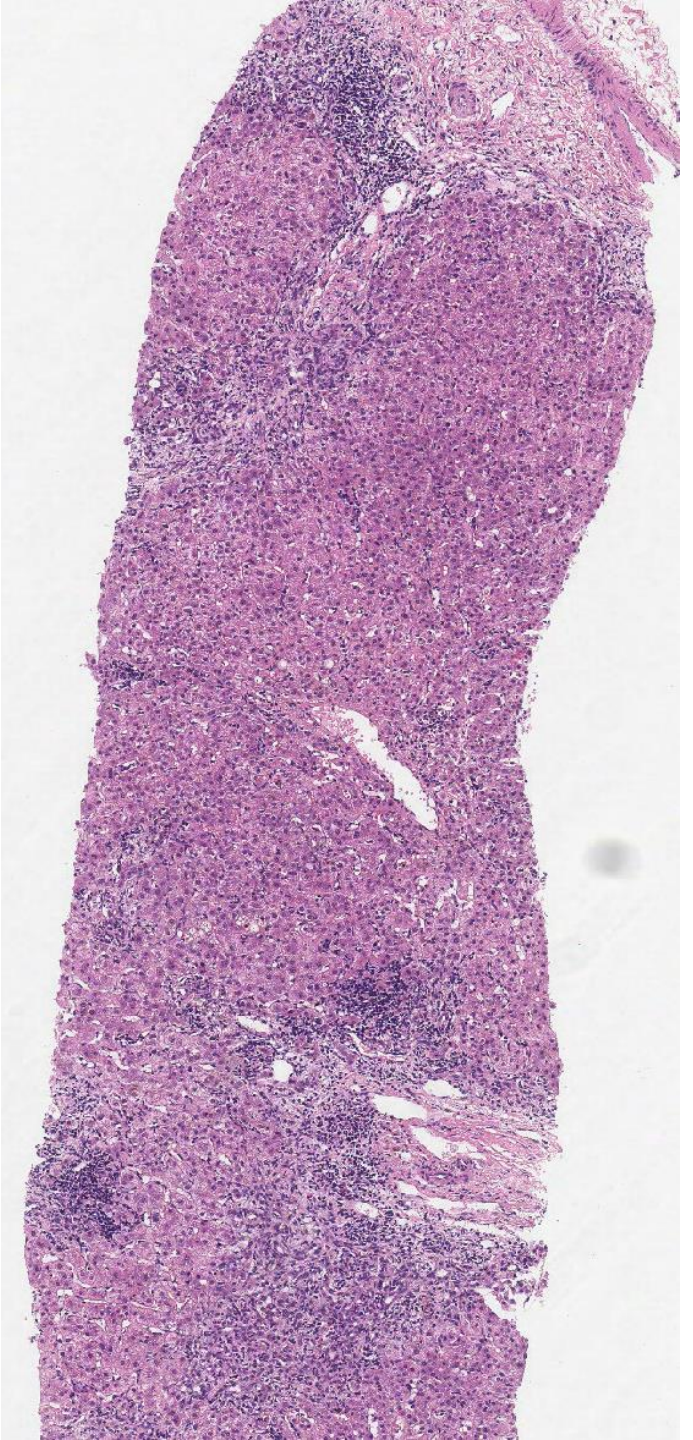
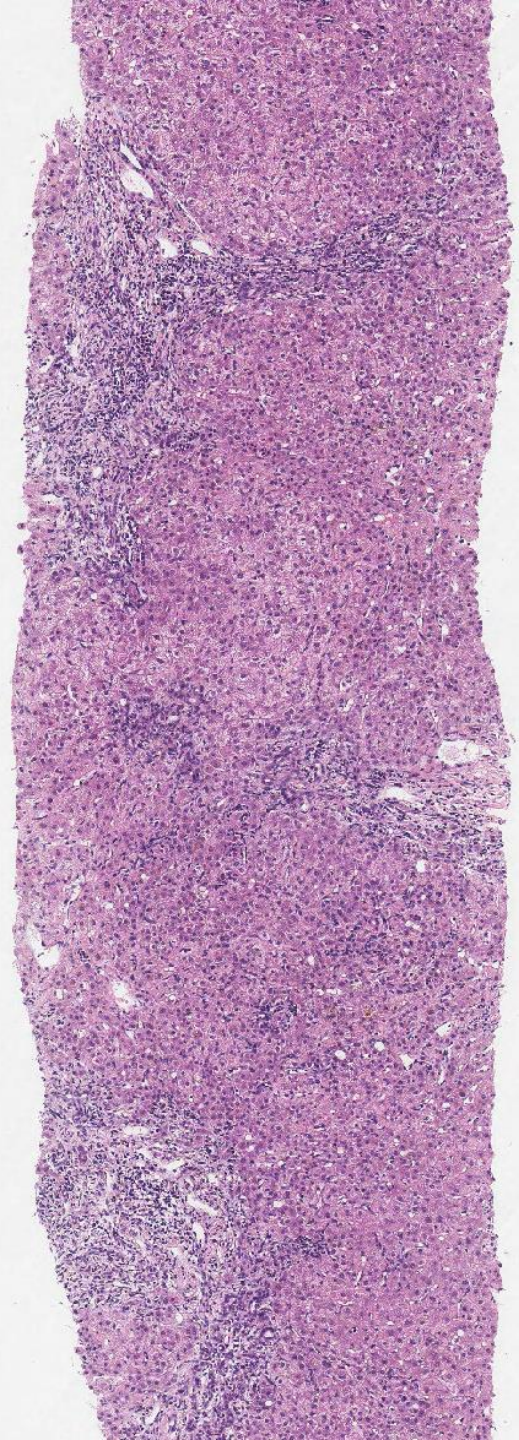
Case LS10 50F

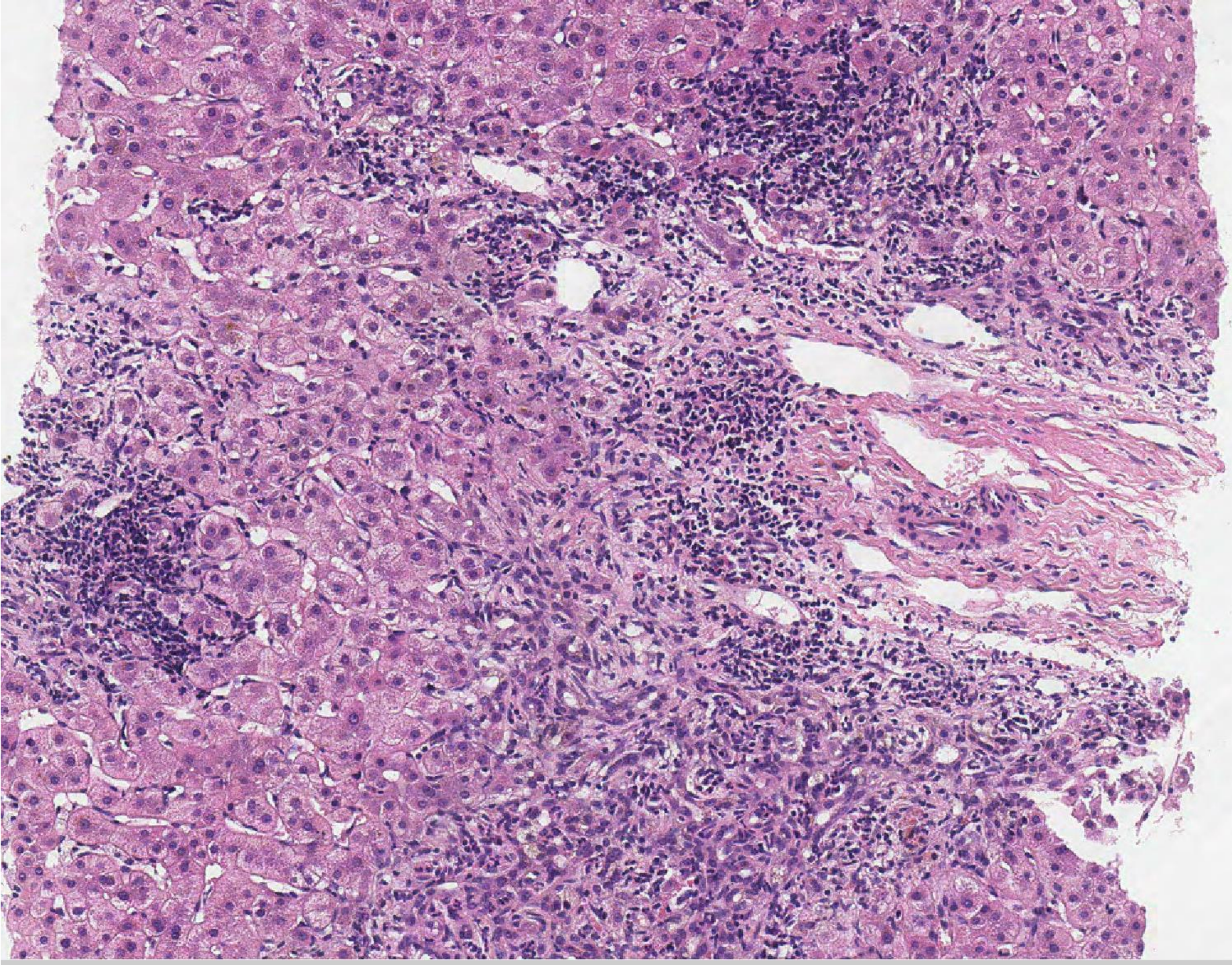
PBC, urso non-responder. Elevated ALT, ? AIH overlap. ALT 255, ALP 615, bilirubin 53, IgG 15.5

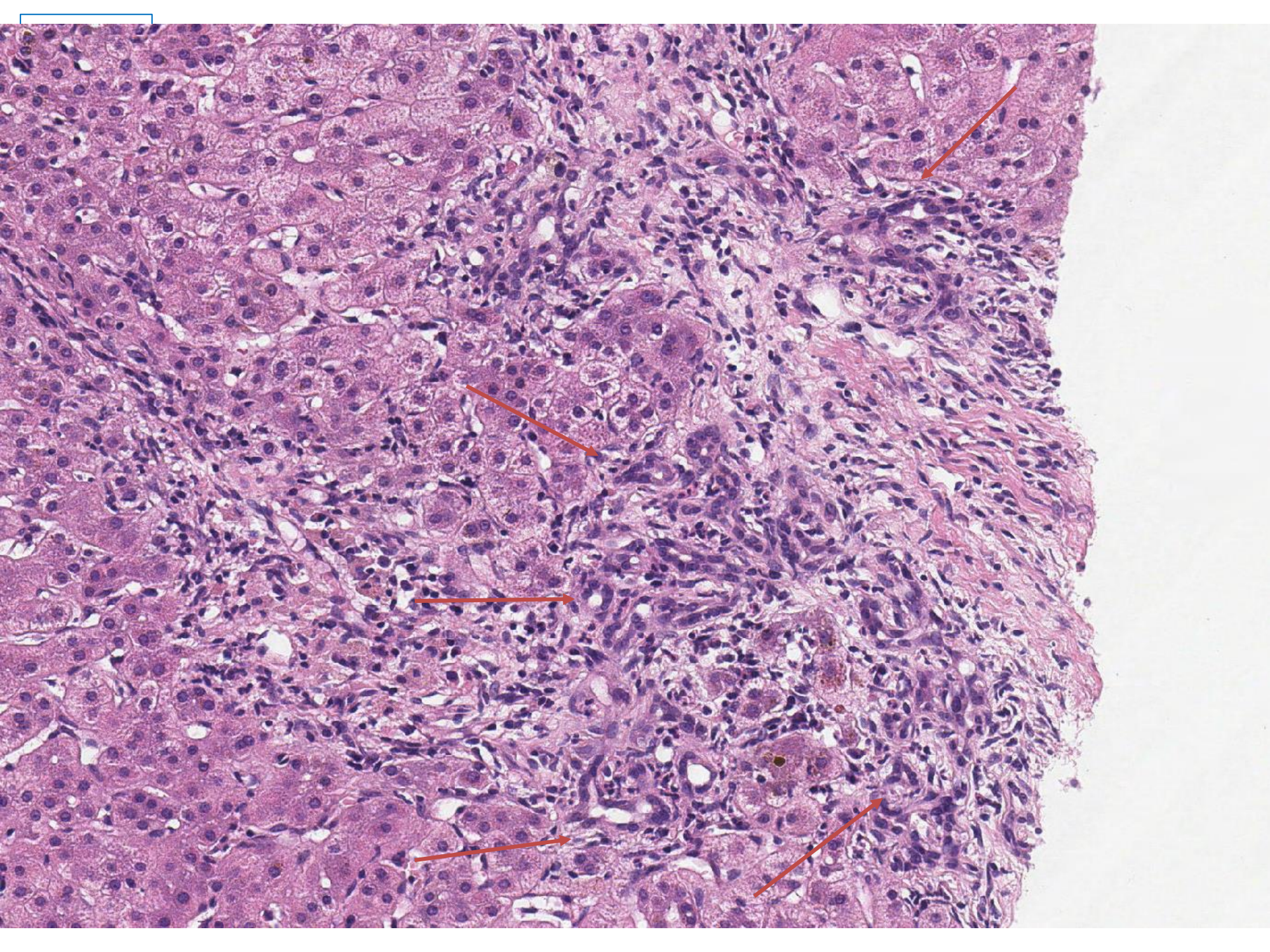
Also reticulin, Shikata, keratin 7

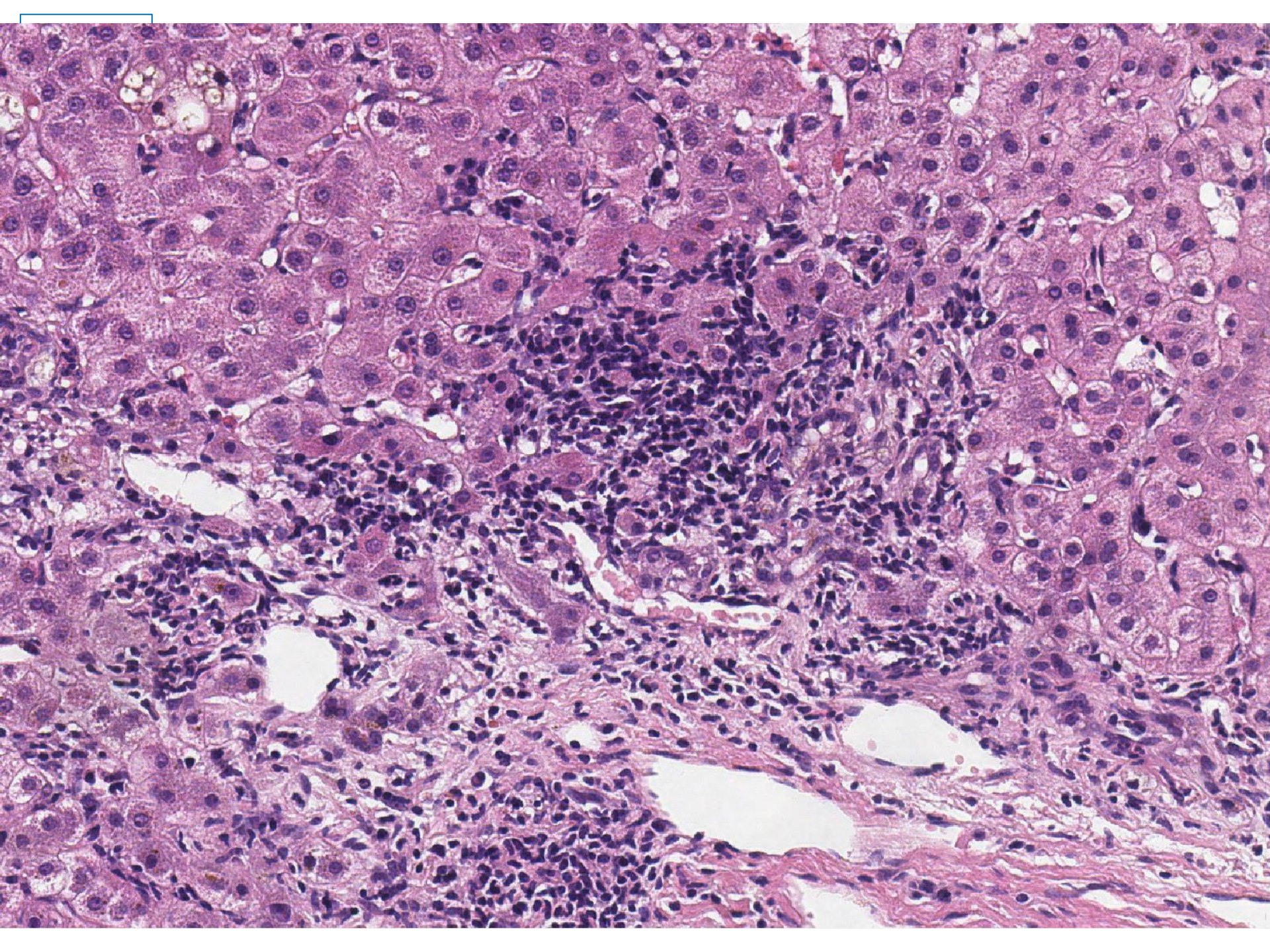


LS

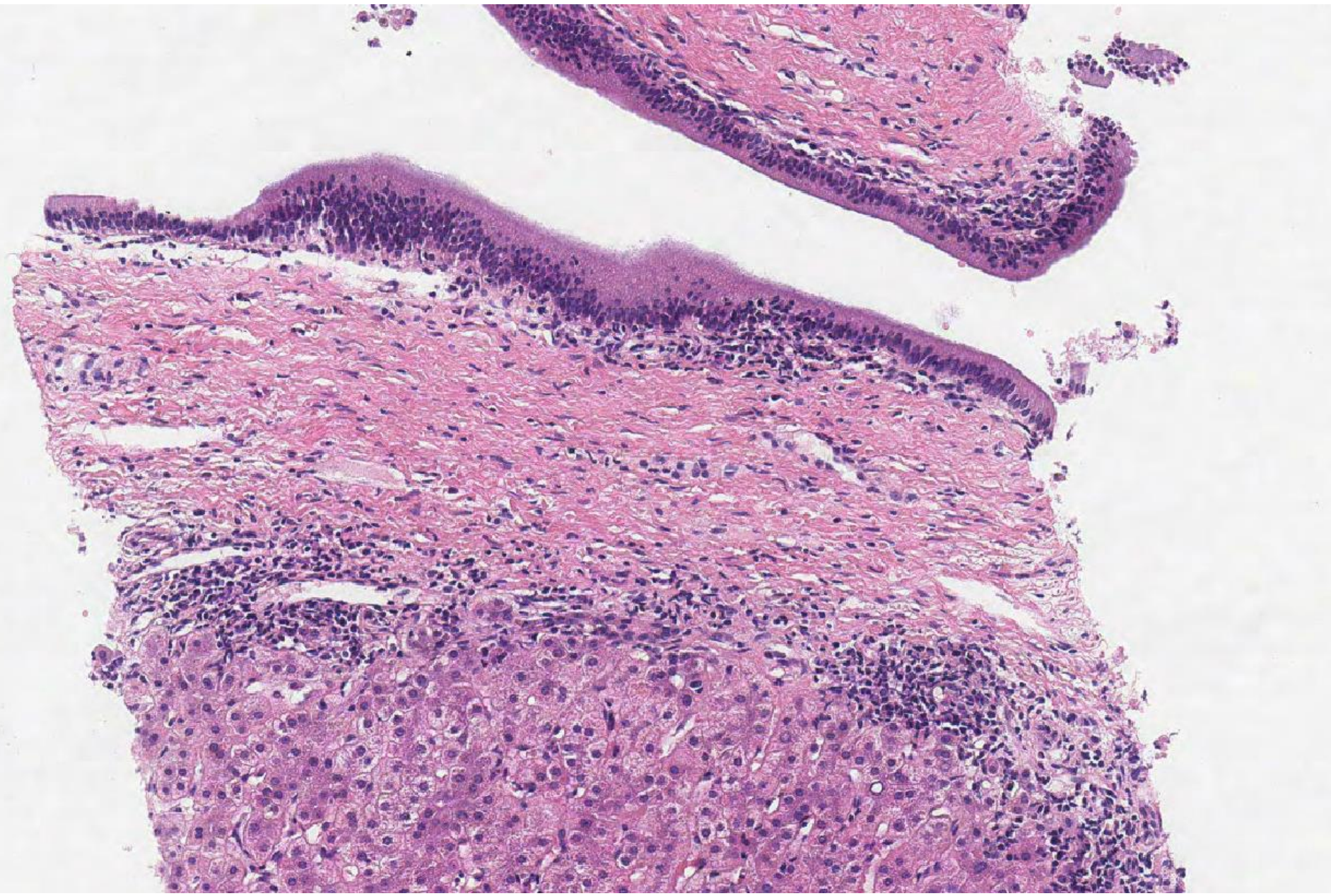




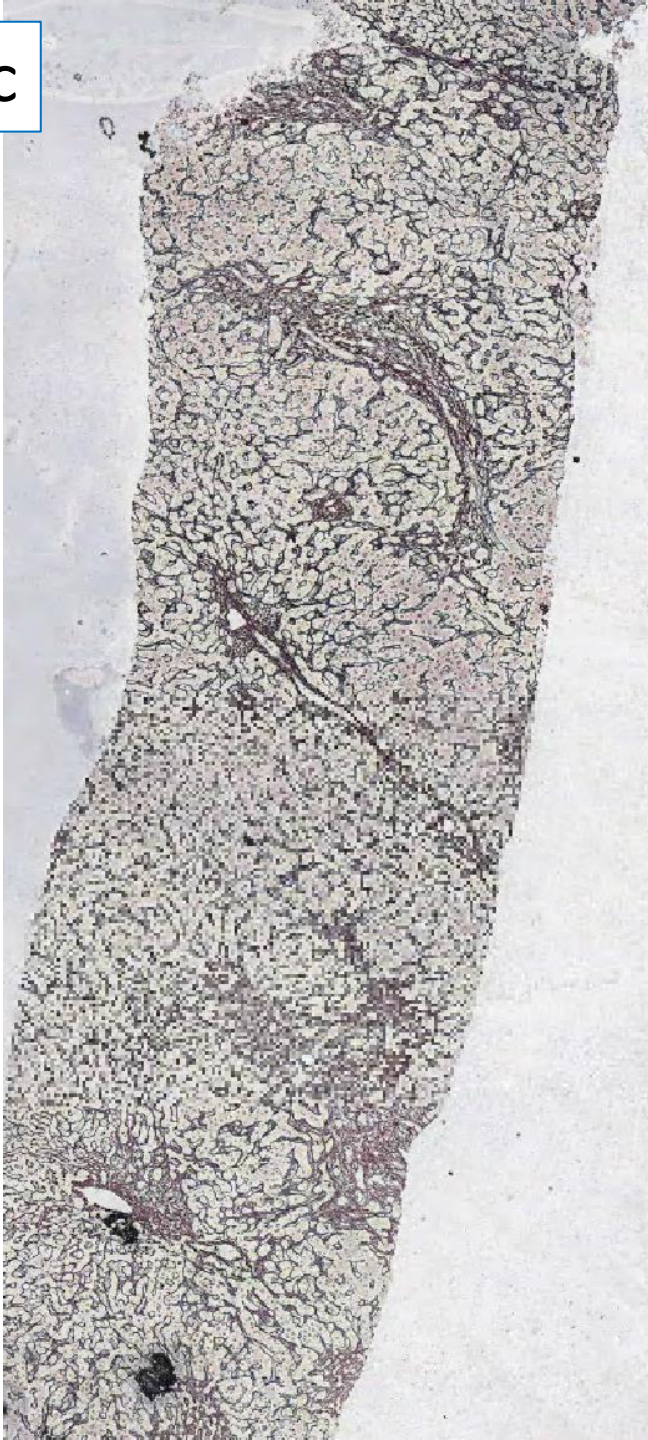




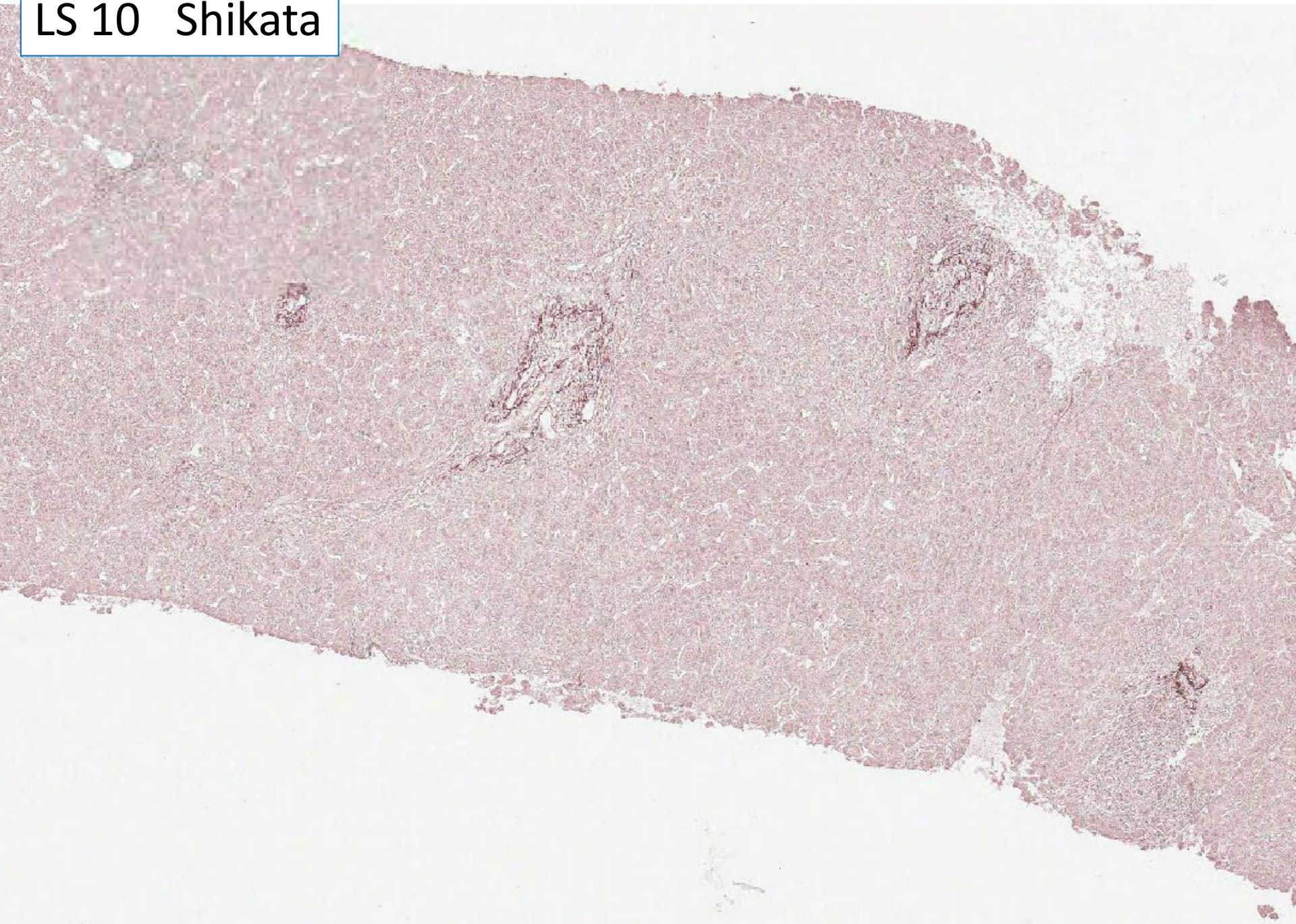
LS 10



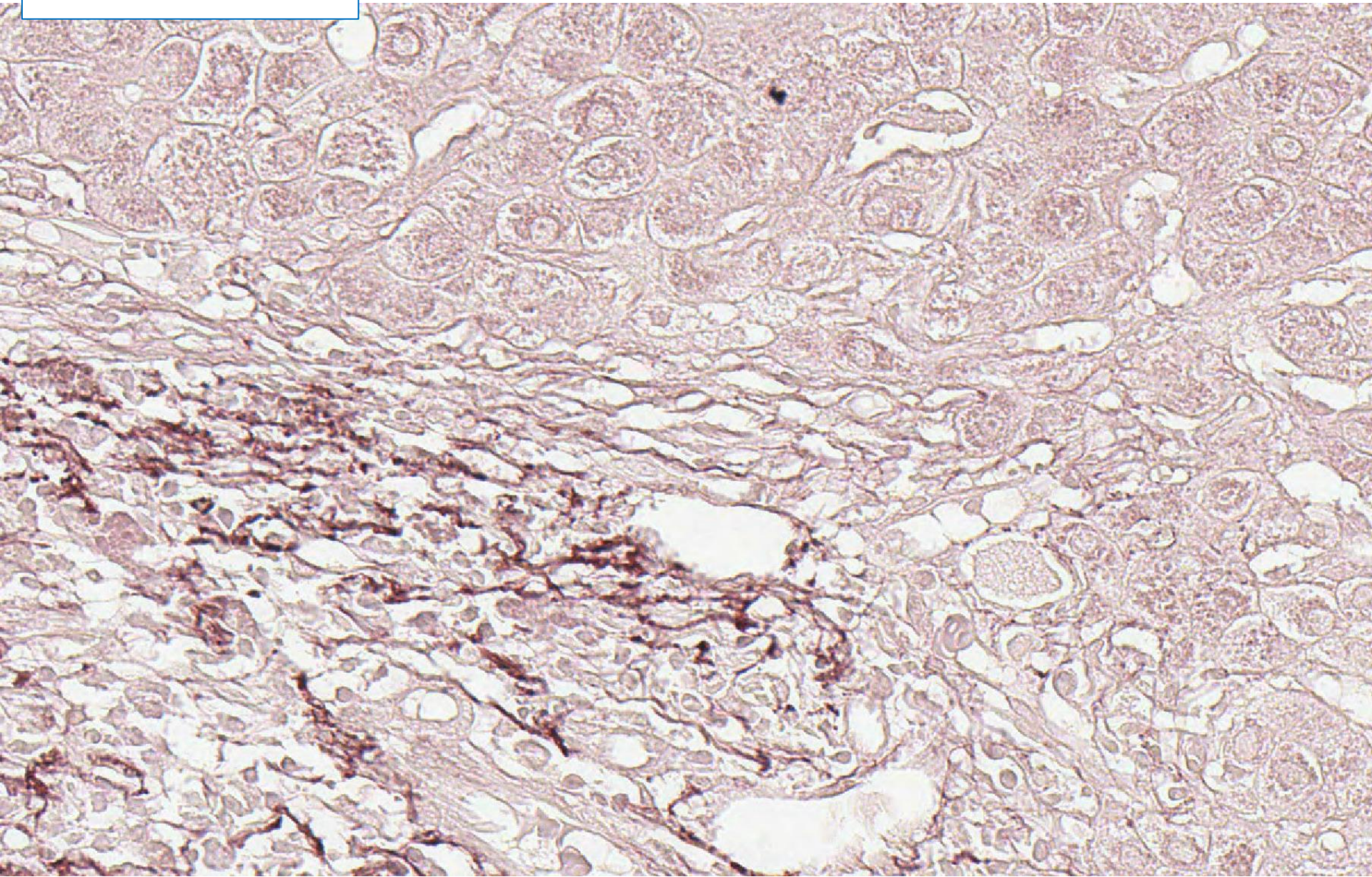
LS 10 retic



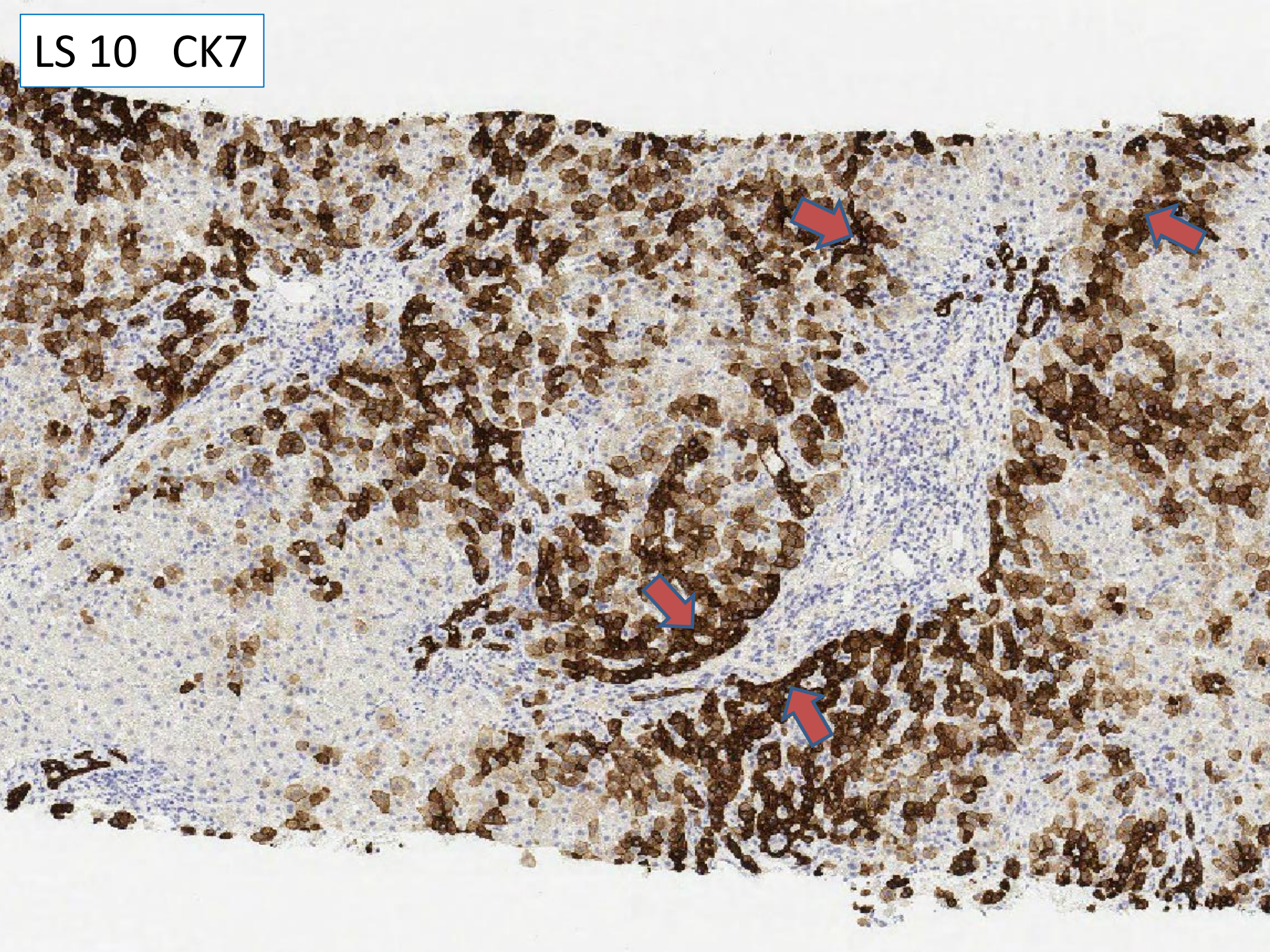
LS 10 Shikata



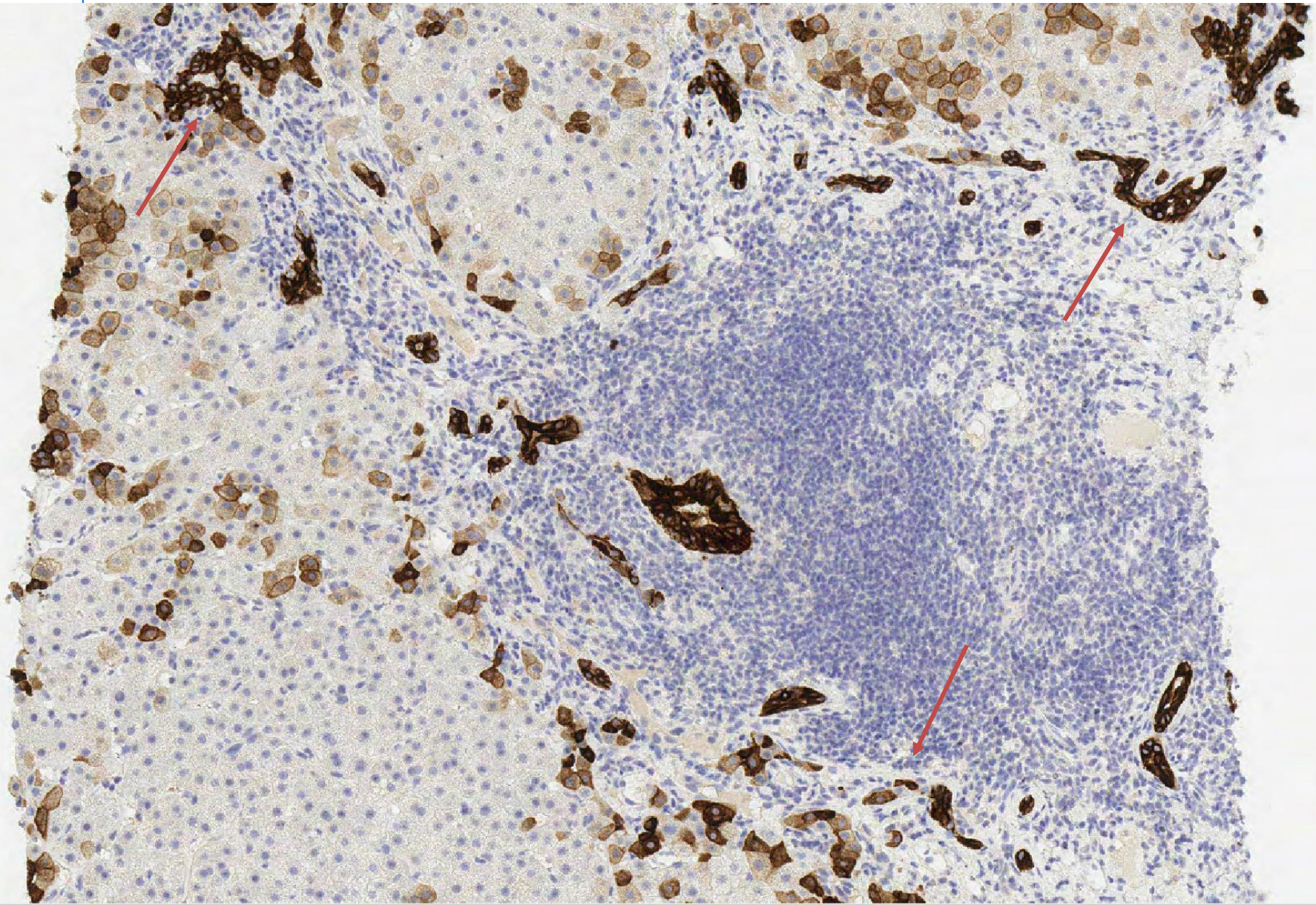
LS 10 Shikata



LS 10 CK7



LS 10



Case LS10 50F

PBC, urso non-responder. Elevated ALT, ? AIH overlap.
ALP 615, bilirubin 53, IgG 15.5

ALT 255,

Also reticulin, Shikata, keratin 7

A	PBC – pre-cirrhotic ductopenic
B	Overlap PBC and AIH
C	Large duct obstruction
D	Drug induced ductopenia
E	Primary sclerosing cholangitis